



# Fleet Management Solutions

## Connect and automate your entire enterprise fleet and all mobile workers.

Our easy-to-use apps increase your visibility and let you manage your entire fleet and mobile workforce more efficiently while ensuring ELD compliance. When you deploy our fleet and field service solutions, all the messy paperwork will be eliminated, your mobile workers will be given powerful tools to do their jobs better, and you'll have insight into all important matters.

### Key Benefits

#### YOUR FLEET

MetTel's enterprise Fleet Management Solutions provide a wide variety of platforms connecting your people, assets and work. We designed our systems to assure driver and worker safety and increase security.

#### OUR TOOLS

Our enterprise customers demand the most reliable and proven connected mobility solutions with flexibility and dependability. We make your fleet more manageable and more profitable with our innovative technology that tracks vehicle and equipment activity, operator identification tools, auto-diagnostics (for routine maintenance), and features a host of cameras to keep a protective eye on your drivers, workers and equipment every step of the way.

#### YOUR CONNECTION

Best-of-breed fleet and mobile solutions to choose from, enabling complete visibility into real-time location and activity of every resource you need on to get your work done.

### Features

#### ASSET & EQUIPMENT TRACKING

Real-time, location-based vehicle and asset tracking.

#### DISPATCHING

A digital bond between dispatcher and driver.

#### ROUTE OPTIMIZATION

Build efficient, cost-effective routes.

#### COMMERCIAL NAVIGATION

Navigation for vehicles with road restrictions.

#### DIGITAL DVIR

Paperless DVIR for a seamless workflow.

#### MAINTENANCE

Automated maintenance logs and reminders.

#### FUEL CARD INTEGRATION

One system for all your fuel data.

#### IFTA REPORTING

Consolidate data for quicker IFTA reports.

## Additional Features

### ELECTRONIC LOGBOOK

Compliant driver logs on iOS, Android and Garmin.

### VEHICLE CAMERAS

See what the driver sees.

### ROADSIDE ASSISTANCE

24/7 peace of mind for drivers and managers.

### DIGITAL FORMS

Custom forms automate workers, reducing paperwork.

### ADVANCED DATA & IOT

Track and monitor anything, anywhere.

### ALERTS & NOTIFICATIONS

Real-time fleet activity notifications.

### FLEET REPORTS & SDK

A variety of data services, improving your fleet's performance.

### DRIVER BEHAVIOR

Incentivize drivers to maximize safety.



## Workforce Safety & Security

### SAFETY IS OUR NUMBER ONE PRIORITY

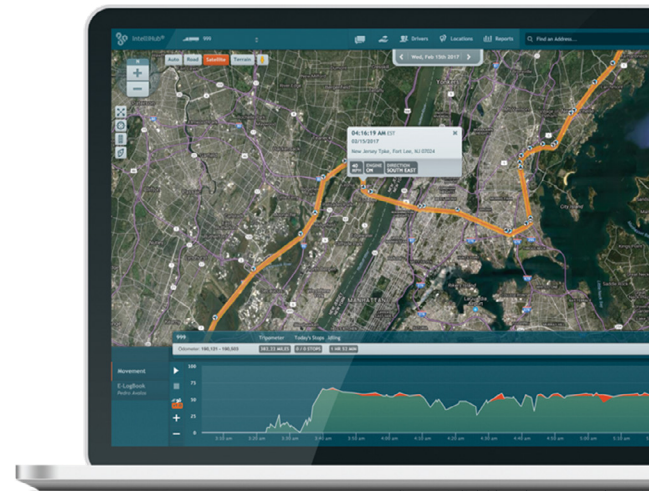
- Your drivers, equipment and assets, workplace and workforce safety—always at the forefront of everything we do.
- MetTel's tools eliminate the need for cell phone use while driving, keeping drivers and others on the road safer.

### IMPORTANT SAFETY MEASURES

- An SOS button in the vehicle for quick and easy access to notify staff that there is an emergency on the jobsite.
- A required remote key-fob device that communicate with the in-vehicle hardware to alert the business of situational awareness of their workers.

## Discover the MetTel Difference

At MetTel, our superior customer service is recognized across all industries. MetTel is a leading global provider of integrated digital communications solutions for enterprise and government customers. By converging all communications over a proprietary network, MetTel enables enterprises to easily deploy and manage technology-driven voice, data, wireless, IoT and cloud solutions worldwide. MetTel's comprehensive portfolio of customer solutions boosts productivity, reduces costs and simplifies operations.



For more info, contact your MetTel agent or visit [mettel.net](https://www.mettel.net).  
© 2025 MetTel. All rights reserved.