

# Remote Learning Solutions

## Secure Devices & Reliable Networks for Successful K-12 Remote Learning

As the new school year approaches, K-12 educators are tasked with finalizing remote learning plans amidst the ongoing COVID-19 pandemic. Collaboration apps like Google Classroom and Zoom for Education are key to these remote learning plans. Yet, equipping students with the devices and reliable networks they need brings big challenges.



MIFI DEVICE



CELLULAR-ENABLED TABLET



CHROMEBOOK

### MetTel Provides

#### 1. MiFi Devices or cellular-enabled Chromebooks or Tablets

Enabling students to access curriculum without Wi-Fi.

#### 2. Procuring, Configuring & Rolling-out Devices

Efficient procurement, configuration, and deployment of Chromebooks/laptops and tablets to ensure that software is up-to-date and ready to be used by all students.

#### 3. Security & Compliance

SD-M that enforces controls so students can securely access approved content on school-owned devices while restricting unwanted browsing and app activity.

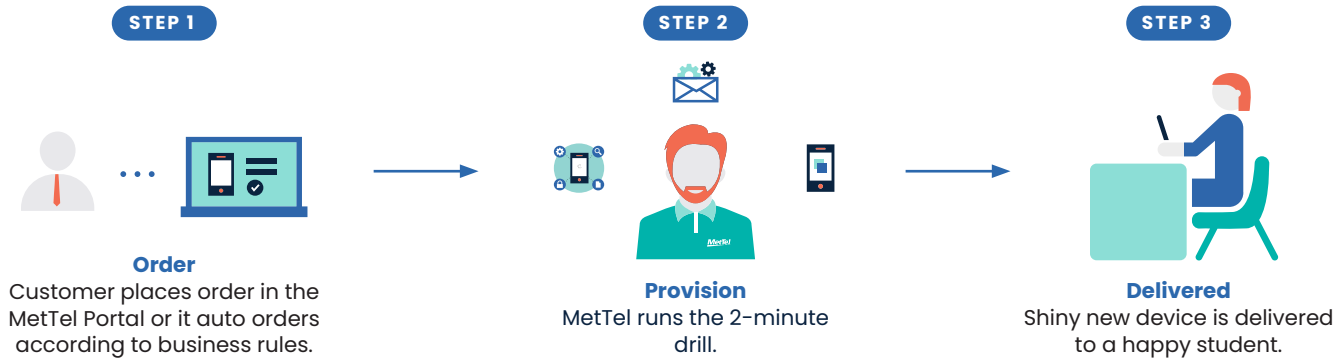
# 61%

of nearly 7.7 million enterprise malware encounters reported in the past month came from those in the education sector, making it **the most affected industry.**

—  
Microsoft Security Intelligence  
June 2020

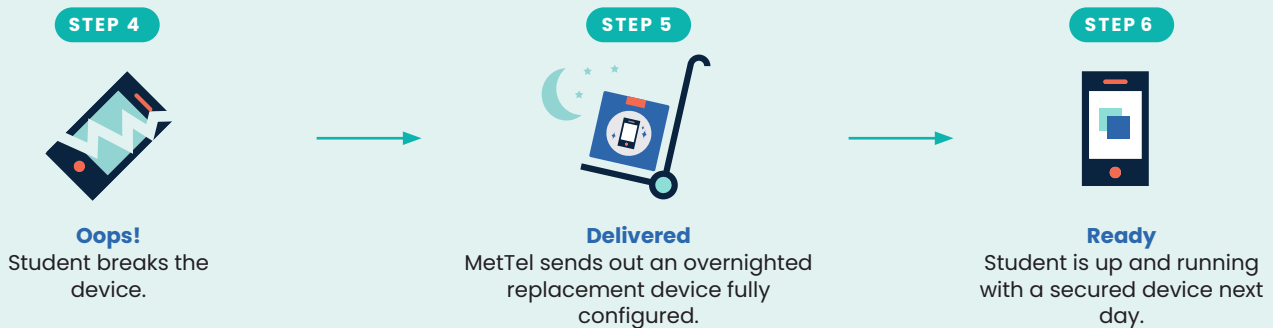
## MetTel's Deploy Process

MetTel handles all staging, kitting and preconfiguring of devices so they arrive to your students ready to use.



### ADD-ON: PROTECT

Accidents will happen! MetTel provides a fully managed protection and replacement program.



### ADD-ON: SD-M

Control and secure students' devices at the network level—even MiFi devices!

#### Secure Your LTE Network

Protect your data from a higher level, without installing an app.

#### Get Data Insights

See which apps are draining data and increasing your costs.

#### Control Usage & Reduce Costs

Enforce corporate policy and block unwanted data consumption.

